

SOLIDWORKS PDM & Manage TOP ENHANCEMENTS IN 2024

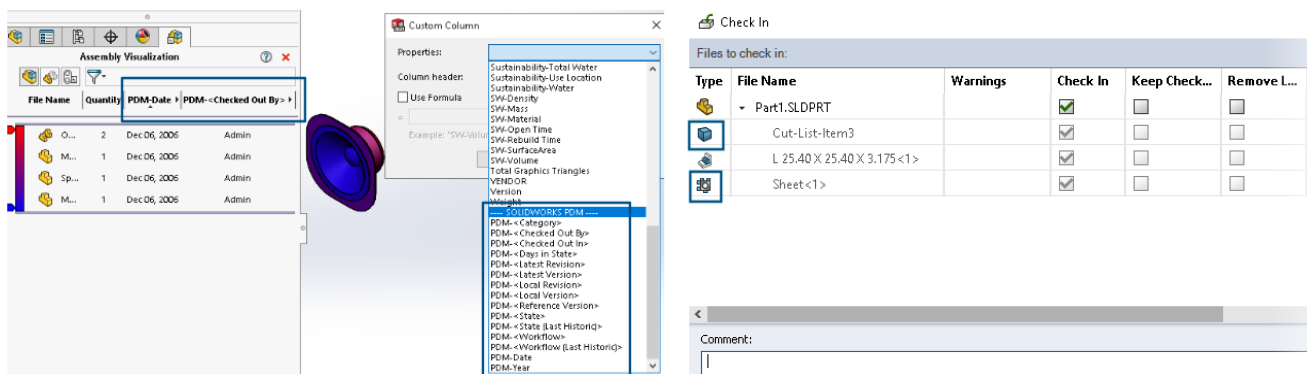
SOLIDWORKS PDM:

SOLIDWORKS PDM saves time every day for SOLIDWORKS users, with immediate access to the right data at the right time.

ENHANCEMENTS:

Improved Visual Content

- With the available assembly visualization feature, user can able to identify the workflow state of each component right-away within the SOLIDWORKS.
- Specific icon for weldment Cut-List is available.



- ✓ *Benefits: Get a clear at-a-glance view of important data and system information.*

Increased Data Protection and Tracking

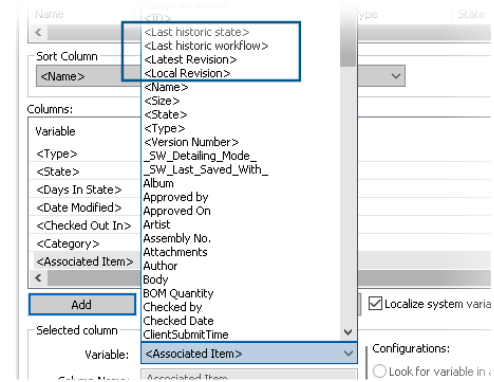
- User cannot able to view the reference information's under Contains and Where Used tabs, if the user is not provided with the necessary access to the referenced file.
- History tracking is provided with Check out & Undo check out actions as well.



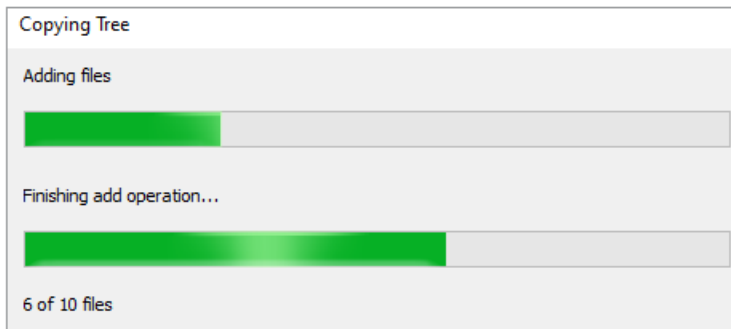
- ✓ *Benefits: Improve data security with additional audit trail information.*

Simplified Access to System Data

- Easily find information about locally cached files in the Windows® Explorer Version tab, including Last historic workflow, Last historic state, and Days in state.
- Quickly access the additional system information in SOLIDWORKS via the Task Pane.
- ✓ **Benefits:** Access file version and system information at your fingertips.



Improved Performance



- Experience faster response times when performing common operations, such as adding files, checking in, changing state, and using Copy Tree.
- ✓ **Benefits:** Get work done faster, with less waiting, when performing common operations.

Streamlined Change State

- Increase productivity by optionally checking out files during a workflow transition.
- ✓ **Benefits:** Reduce mouse clicks and start working sooner.

Change State - Do Transition 'Submit for Approval'

Change state on files:						
Type	File Name	Warnings	Check Out	Change State	Version	For
	base.SLDPRT		<input checked="" type="checkbox"/>	<input checked="" type="checkbox"/>	1/1	
	BASEWELDMENT.SLDDRW		<input type="checkbox"/>	<input checked="" type="checkbox"/>	1/1	
	BASEWELDMENT.SLDPRT		<input type="checkbox"/>	<input checked="" type="checkbox"/>	1/1	

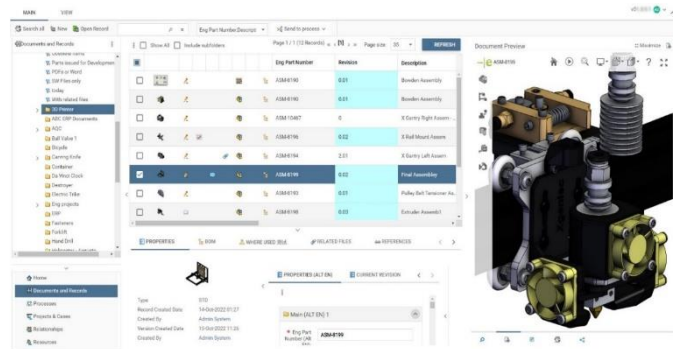
SOLIDWORKS MANAGE:

SOLIDWORKS Manage is an advanced, all-inclusive data management system that expands the capabilities of SOLIDWORKS PDM.

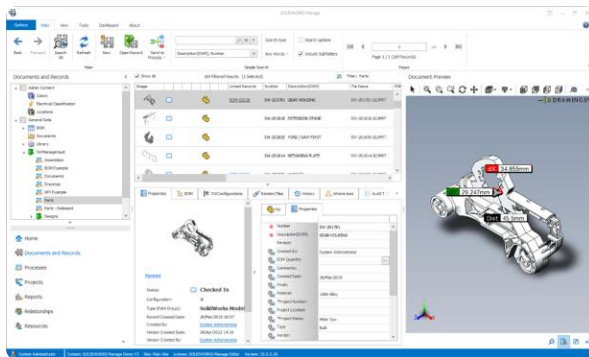
ENHANCEMENTS:

Web Client - Integrated eDrawings Preview

- The eDrawings web-based viewer is now included for viewing CAD files.
- Removes complexity and enables faster viewing and measuring.



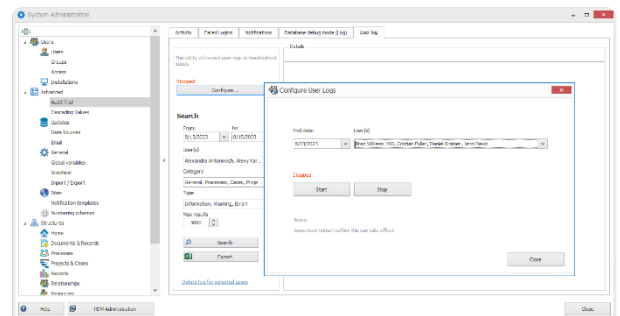
Desktop Client – Preview Enhancements



- Desktop eDrawings preview now has measure and ambient occlusion

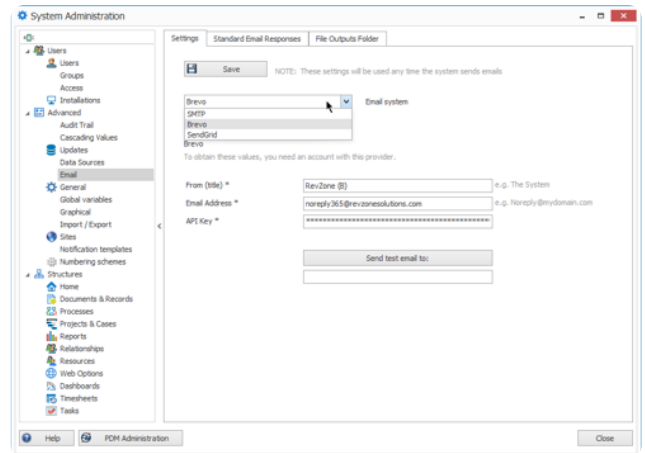
Administration User Logs

- Capture log information without each user needing to enable it, providing easier access to troubleshooting data

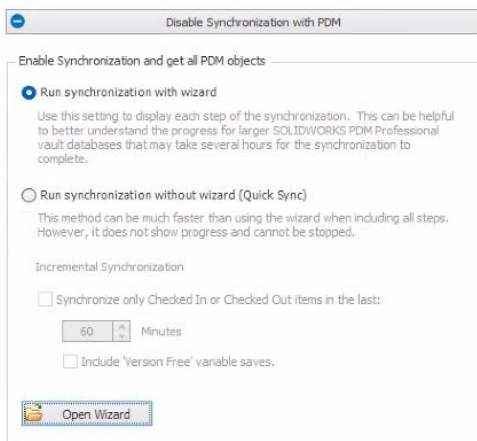


New Email Service Options

- Third party email forwarding services can now be utilized to send emails
- Support Brevo and SendGrid services
- Eliminates the need to process emails through the corporate system



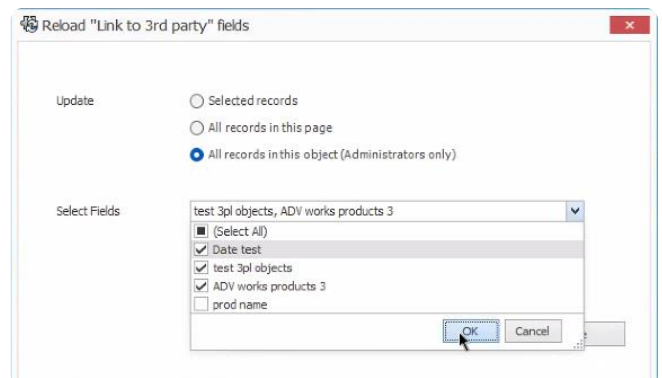
PDM Administration Synchronization Dialog



- The synchronization dialog has been redesigned to use radio button options
- Easier to understand what sync method will be used

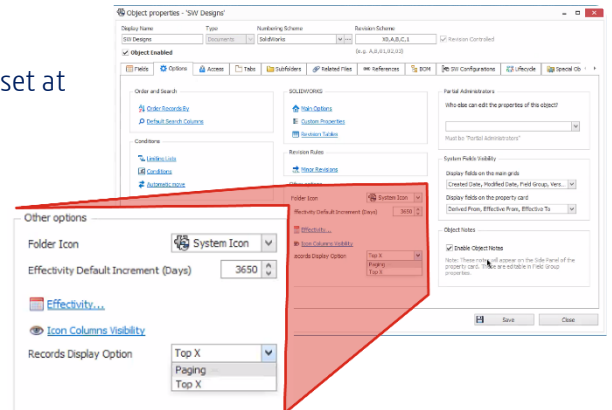
Refresh Link to 3rd Party Fields

- Link to 3rd Party Fields can now be refreshed in bulk
- Only admins can update the entire object
- Streamlines updates to new or modified fields

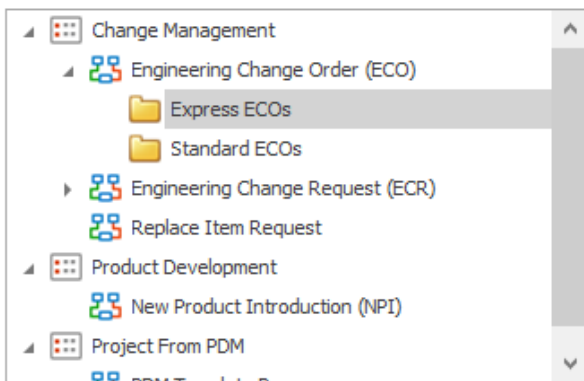


Records Display Options

- The Records Display Option TopX or Paging can now be set at the object level
- Easier to configure object display



Project and Process Folders



- Folders can now be added under Project and Process objects
- Automatic move can also be configured
- Provides better record organization and easier access

Thank You!!